

# UNC-BEST



**A fast-track degree  
program for future  
high school science  
or mathematics  
classroom leaders**

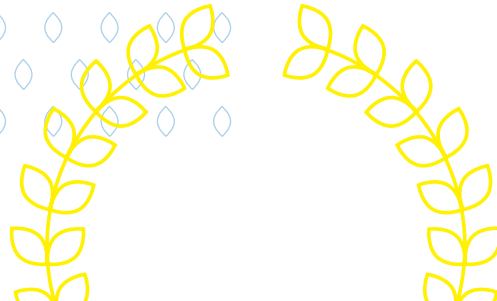
## At A Glance

**Degree Type:** Bachelor of Arts or Bachelor of Science in Biology, Chemistry, Geological Science, Physics or Mathematics

**Application Deadline:** Spring 2021 — October 13, 2020  
Fall 2021 — April 13, 2021

The UNC Baccalaureate Education in Science and Teaching (UNC-BEST) program is a fast-track program designed for UNC College of Arts & Sciences students majoring in mathematics or science to earn their teaching license.

Students take a teaching methods course in their major, which counts toward degree requirements, three education courses, which meet General Education Requirements, and complete a student teaching internship where they teach alongside an experienced teacher in a high school science classroom.



# UNC-BEST

The collaborative program — between the UNC School of Education and the UNC College of Arts & Sciences — provides students:

- Knowledge, skills and research-based best practices to be the most effective educators
- A 14-week full-time professional student teaching internship in a local high school classroom
- The opportunity to complete a bachelor's degree and obtain licensure as a secondary science or mathematics teacher — in four years

UNC-BEST students are eligible for the North Carolina Teaching Fellows. The teaching fellows program provides up to \$4,125 per semester in forgivable loans for a commitment to serve as a secondary science or mathematics teacher in a North Carolina public high school.



Mallory Nickel '12  
*Science Teacher*  
*AVID Site Coordinator*  
*Advisory PLC Leader*  
Lee County School District

---

## How will you propel the world?

### To learn more about UNC-BEST:

Contact Jennifer Coble at [jcoble@bio.unc.edu](mailto:jcoble@bio.unc.edu)  
or (919) 962-3705

### To learn more about applying:

Call (919) 966-1346

Visit [ed.unc.edu/unc-best](https://ed.unc.edu/unc-best)

**PROPEL**  
the WORLD